



UPPER EXTRUDER
SCREW Ø120

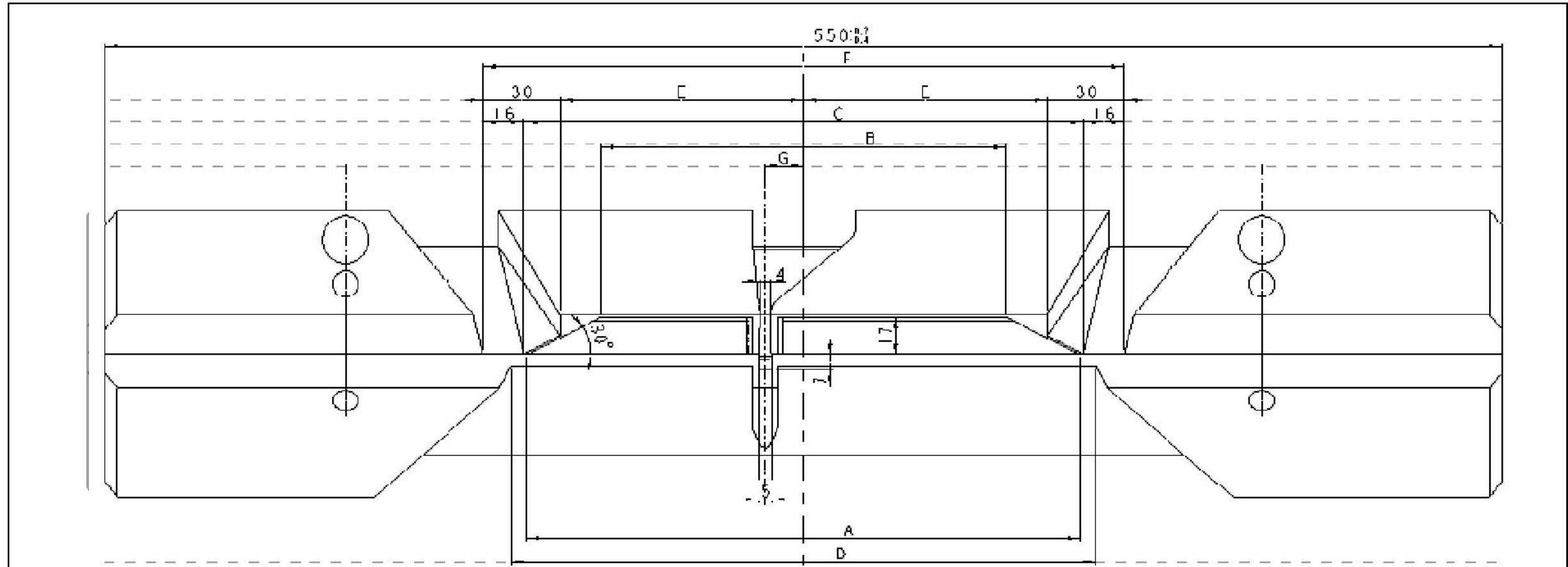
MEDIUM EXTRUDER
SCREW Ø200

LOWER EXTRUDER
SCREW Ø120

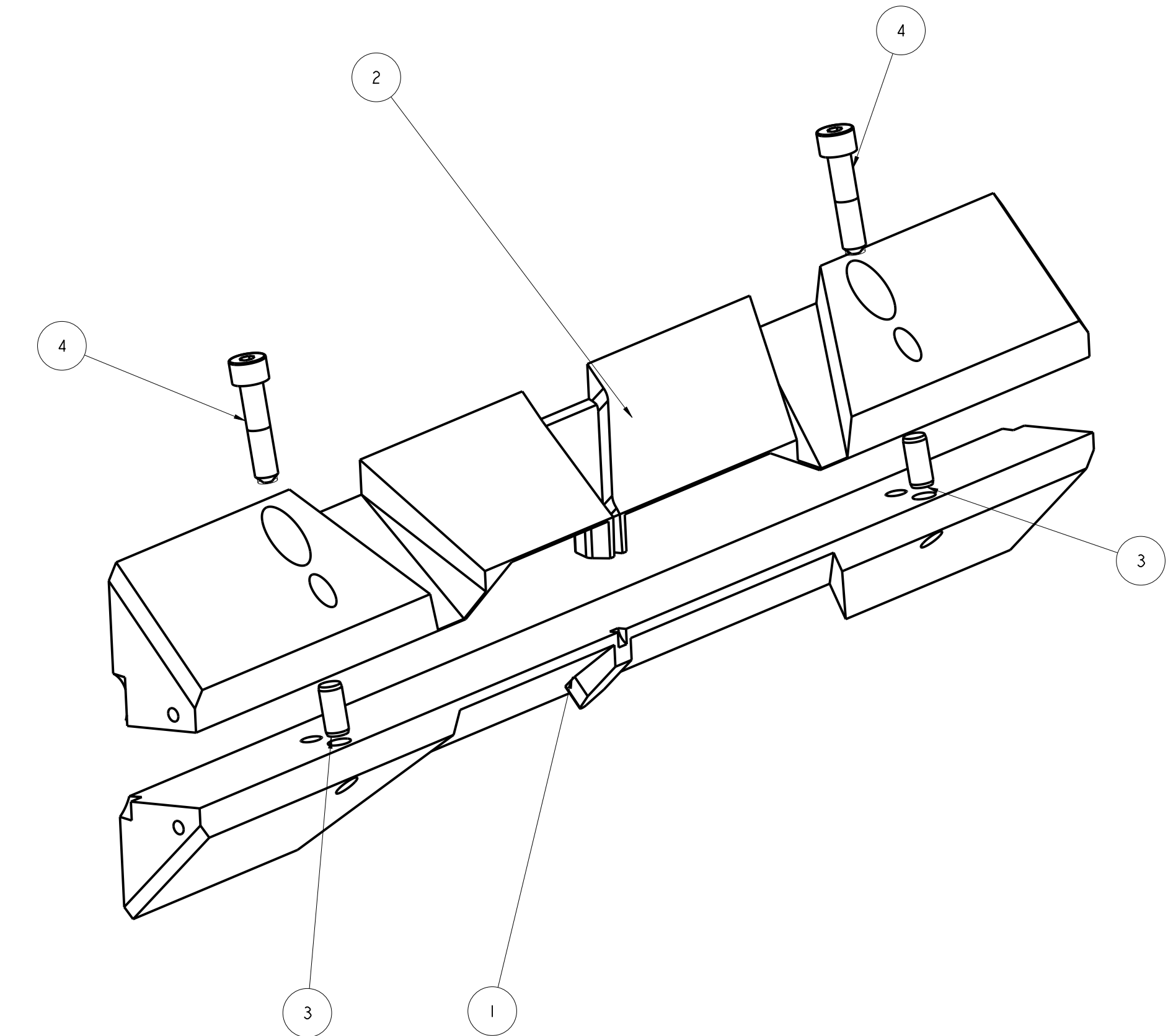
Grinding allowance 0.25mm

1.6 / (0.4 $\sqrt{\text{Grinded}}$ 0.05 $\sqrt{\text{Polished}}$ Flow Channel Surface)

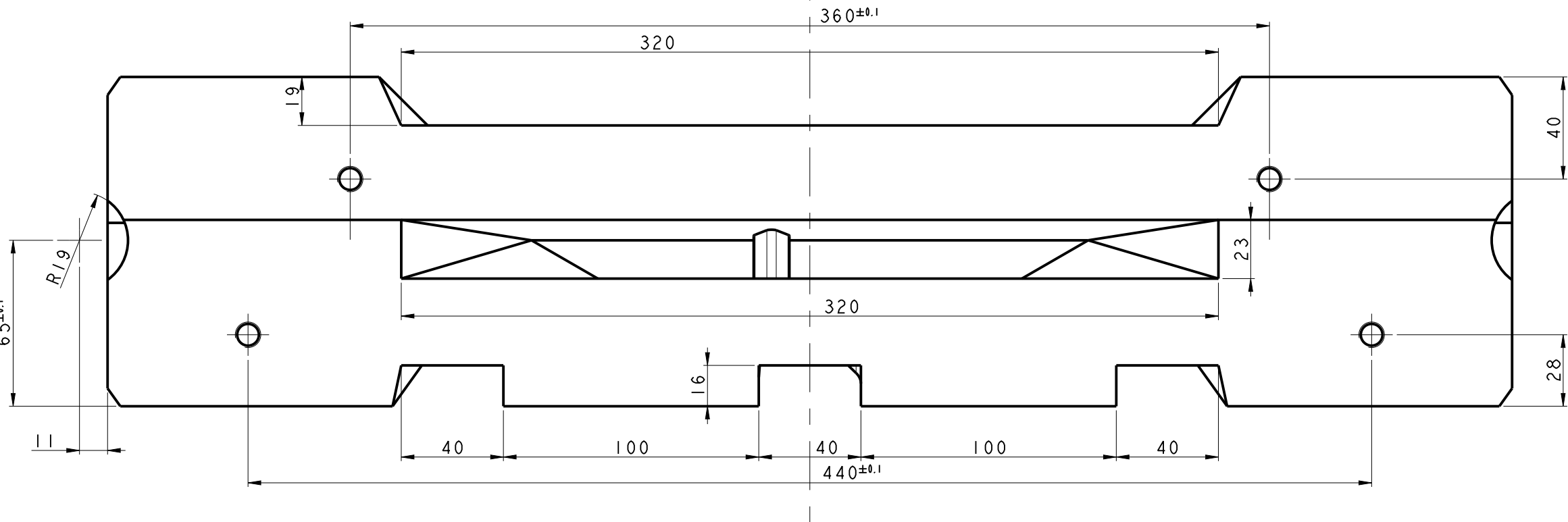
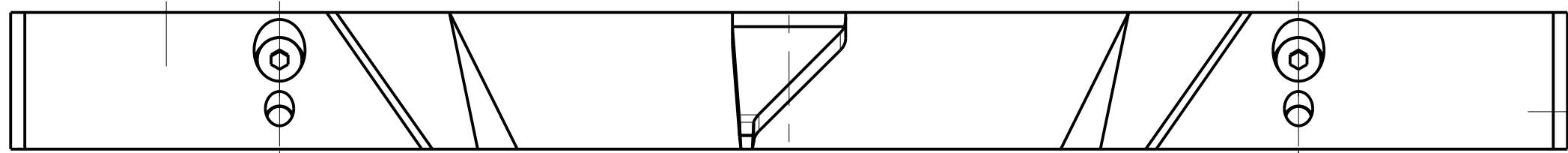
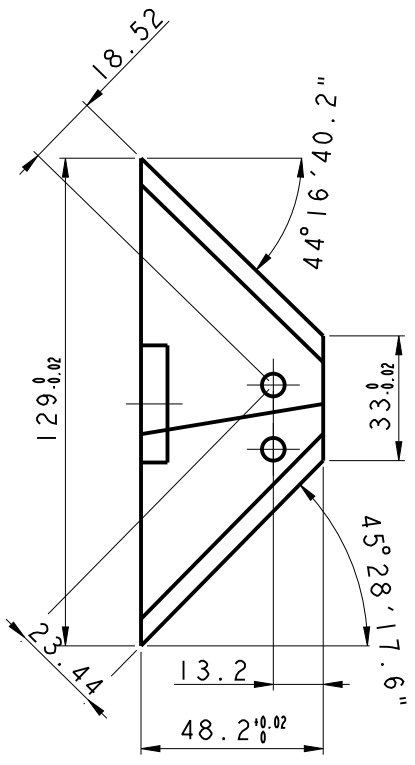
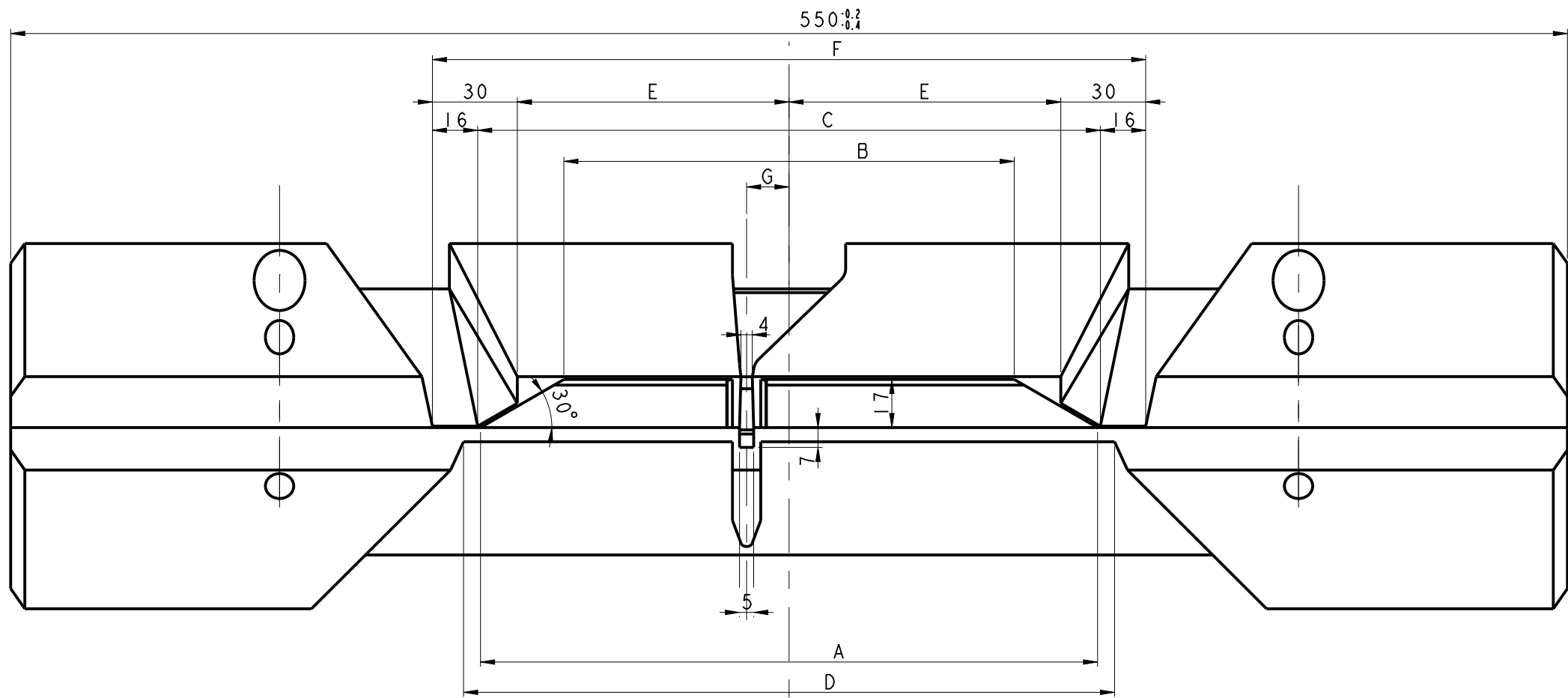
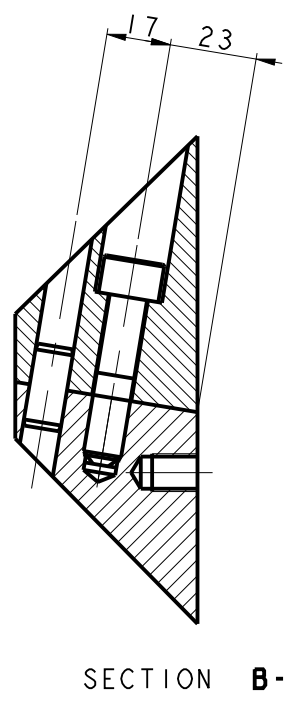
[illegible]



| parametric dimensions | | | | | | | | | Chimney position from centerline | | |
|-----------------------|-----|--------|-----|-----|-----|-----|-----|--------|----------------------------------|--------------|--------------|
| Type | A | B | C | D | E | 2E | F | G | Type | G0 | G15 |
| ✓ 140 | 138 | 79,11 | 140 | 150 | 61 | 122 | 172 | 0 - 15 | 140 | MG303614 -00 | MG303615 -00 |
| 150 | 148 | 89,11 | 150 | 160 | 66 | 132 | 182 | 0 - 15 | 150 | MG303616 -00 | MG303617 -00 |
| ✓ 160 | 158 | 99,11 | 160 | 170 | 71 | 142 | 192 | 0 - 15 | 160 | MG303618 -00 | MG303619 -00 |
| ✓ 170 | 168 | 109,11 | 170 | 180 | 76 | 152 | 202 | 0 - 15 | 170 | MG303625 -00 | MG303626 -00 |
| 180 | 178 | 119,11 | 180 | 190 | 81 | 162 | 212 | 0 - 15 | 180 | MG303627 -00 | MG303628 -00 |
| ✓ 190 | 188 | 129,11 | 190 | 200 | 86 | 172 | 222 | 0 - 15 | 190 | MG303629 -00 | MG303630 -00 |
| ✓ 200 | 198 | 139,11 | 200 | 210 | 91 | 182 | 232 | 0 - 15 | 200 | MG303631 -00 | MG303632 -00 |
| 210 | 208 | 149,11 | 210 | 220 | 96 | 192 | 242 | 0 - 15 | 210 | MG303633 -00 | MG303634 -00 |
| 220 | 218 | 159,11 | 220 | 230 | 101 | 202 | 252 | 0 - 15 | 220 | MG303635 -00 | MG303636 -00 |
| 230 | 228 | 169,11 | 230 | 240 | 106 | 212 | 262 | 0 - 15 | 230 | MG303637 -00 | MG303638 -00 |
| 240 | 238 | 179,11 | 240 | 250 | 111 | 222 | 272 | 0 - 15 | 240 | MG303639 -00 | MG303640 -00 |
| 250 | 248 | 189,11 | 250 | 260 | 116 | 232 | 282 | 0 - 15 | 250 | MG303641 -00 | MG303642 -00 |
| 260 | 258 | 199,11 | 260 | 270 | 121 | 242 | 292 | 0 - 15 | 260 | MG303643 -00 | MG303644 -00 |
| 270 | 268 | 209,11 | 270 | 280 | 126 | 252 | 302 | 0 - 15 | 270 | MG303645 -00 | MG303646 -00 |



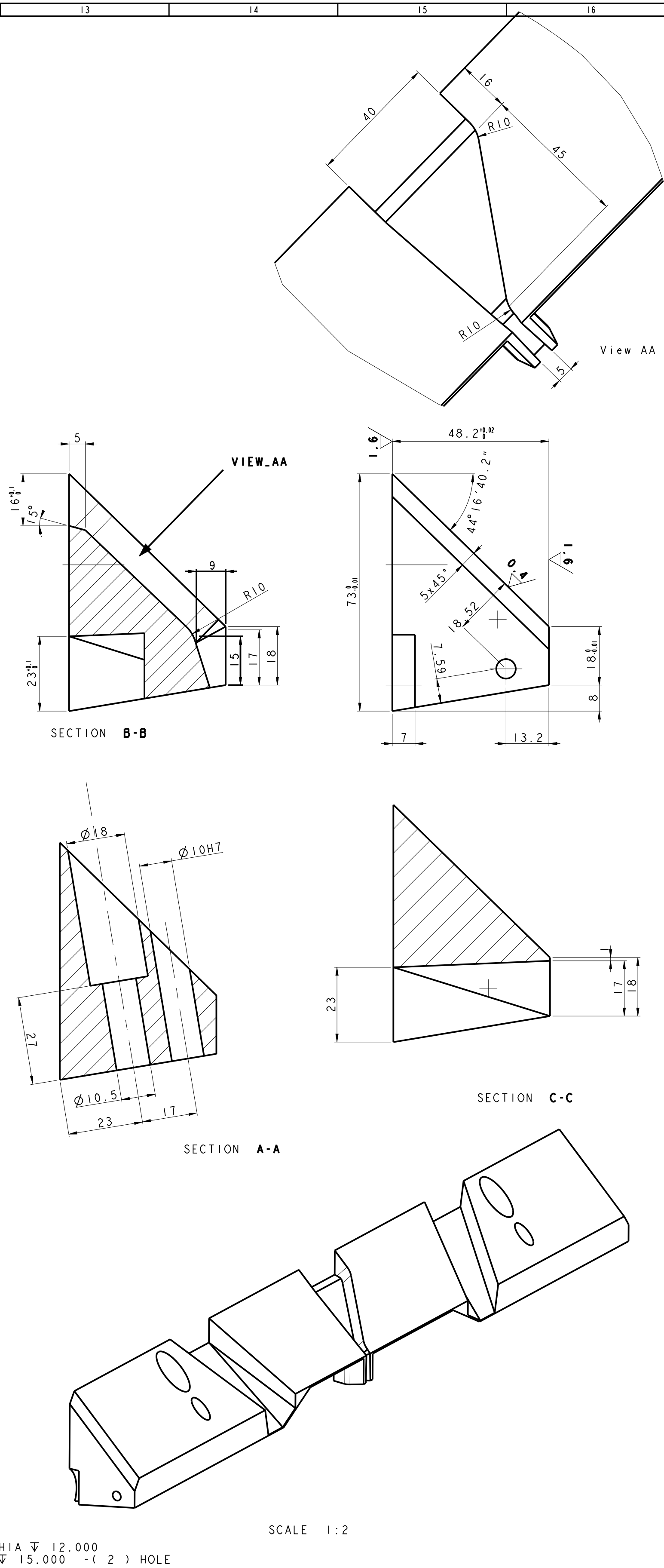
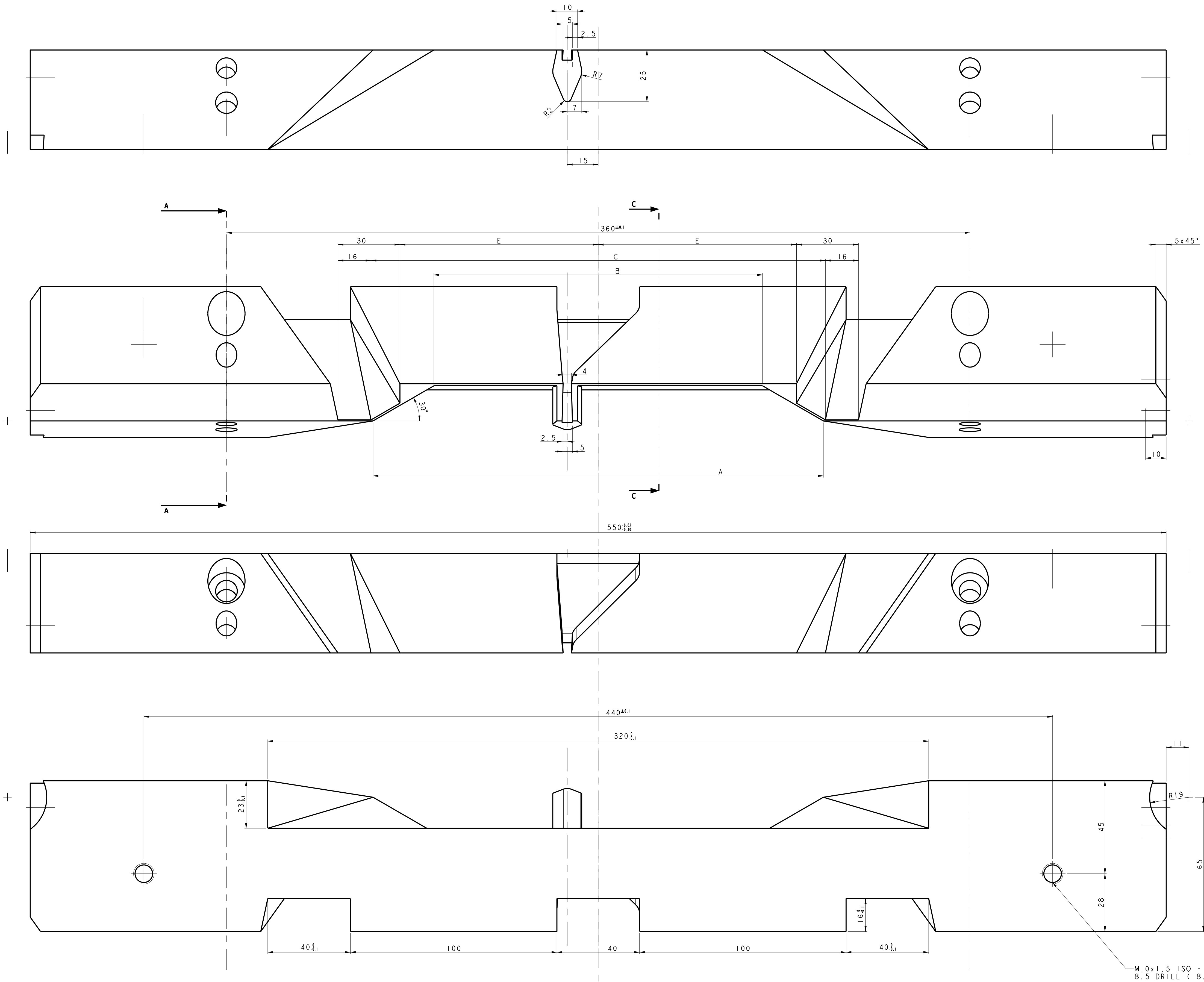
| COMPONENTS LIST | | | | |
|-----------------|---|----------------------------|-----|----------------|
| INDEX | DESCRIPTION | MATERIAL | QTY | DRAWING NUMBER |
| 1 | KONSTRUKTA 3 PLEX - KIROV - LOWER TREAD | X0CrMoMn7 | 1 | MG303647-00 |
| 2 | KONSTRUKTA 3 PLEX - KIROV - UPPER TREAD | X0CrMoMn7 | 1 | MG303647-00 |
| 3 | PARALLEL PINS Ø10x22 h6 - ISO 2338 | X 10 Cr Ni S 18.9 (1.4305) | 2 | DTP_18-003-00 |
| 4 | SCREW M10x1.5x45 - DIN 912 | STEEL 8.8 | 2 | -- |



Grinding allowance 0.25mm

$\sqrt{1.6}$ (0.4 Grinded 0.05 Polished Fine Channel Surface)

| | | | | | |
|--------------------------|-----------|---------------------------------------|-------------|-------------|------------|
| REV. | | DATE | DESCRIPTION | | GROUP CODE |
| MACHINE | | MACHINE CODE | | GROUP | GROUP CODE |
| 3PLEX KONSTRUKTA - KIROV | | | | | |
| UNLISTED CHAMFER 0.2x45 | | GENERAL WORKING TOLERANCE | | TREATMENT | WEIGHT |
| UNI: ISO 2768 - mK | | | | | |
| EXTERNAL D/F | DIMENSION | 0 | 6 | 30 | 120 |
| INTERNAL D/F | GROUP | 0 | 30 | 120 | 400 |
| W. DECIMAL | | 0.1 | 0.1 | 0.1 | 0.5 |
| W.O. DECIMAL | | 0.2 | 0.4 | 0.6 | 1 |
| SCALE | | DESIGNED | | APPROVED | DATE |
| 1:2 | | RB | | GS | Jul-28-21 |
| PRODUCT: | | KONSTRUKTA 3 PLEX - KIROV - TREAD X+1 | | DRAWING N. | FORMAT |
| PARAMETRIC DRAWING | | | | MG303647-00 | A1 |



M10x1.5 ISO - H MASCHIA Ψ 12.000
8.5 DRILL (8.500) Ψ 15.000 - (2) HOLE

Grinding allowance 0.25mm
1/6 (0.4 Grinded 0.05 Polished)
Tip Channel Surface

| REV. | | DATE | | DESCRIPTION | | GROUP CODE | |
|---|--|---------------------------|--|---------------------------|--|--------------------------|--|
| MACHINE | | MACHINE CODE | | GROUP | | GROUP CODE | |
| 3PLEX KONSTRUKTA - KIROV | | | | | | | |
| UNLISTED CHAMFER 0,2x45 | | GENERAL WORKING TOLERANCE | | TREATMENT | | WEIGHT | |
| UNI 150 2768 - mK | | | | | | | |
| EXTERNAL D/F DIMENSION | | INTERNAL D/F DIMENSION | | W. DECIMAL | | MATERIAL | |
| 0 4 30 120 400 1000 > 2000 | | 0 4 30 120 400 1000 2000 | | 0.1 0.1 0.1 0.5 0.8 1.2 2 | | AUC/100m7 | |
| W.O. DECIMAL | | W.O. DECIMAL | | REPLACES | | MODEL | |
| 0.2 0.4 0.6 1 | | 0.2 0.4 0.6 1 | | KON_3PLEX_TREAD_UPPER_X1 | | KON_3PLEX_TREAD_UPPER_X1 | |
| SCALE | | DESIGNED | | APPROVED | | DATE | |
| 1:1 | | RB | | GS | | Jul-28-21 | |
| PRODUCT: | | DRAWING N. | | FORMAT | | SHEET | |
| KONSTRUKTA 3 PLEX - KIROV - UPPER TREAD X+1 | | MG303647-00 | | A1 | | 3 of 4 | |
| PARAMETRIC DRAWING | | | | | | | |

| | | | | | | | | | | | | | | | | | | | | |
|------------------------------------|--|-----------------|--|--------|---------|-----------|---|-------------|----------------|--------|--------------------------------|-----------|-----------------------|----------|--|-------------------|---------------------------|-----------------|--------------------------|--|
| | | | | | | | | | | | | | | | | | | | | |
| № Pitch | | | | | | | | | | | | | | | | | | | | |
| | | | | | | | | | | | | | | | | | | | | |
| | | | | | | | | | | | | | | | | | | | | |
| | | | | | | | | | | | | | | | | | | | | |
| | | | | | | | | | | | | | | | | | | | | |
| | | | | | | | | | | | | | | | | | | | | |
| REV. | | | | DATE | | | | DESCRIPTION | | | | | | | | | | | | |
| MACHINE 3PLEX KONSTRUKTA -KIROV | | | | | | | MACHINE CODE | | | | GROUP | | | | | GROUP CODE | | | | |
| UNLINED CHAMFER 0,2x45 | | | GENERAL WORKING TOLERANCE UNI ISO 2768 - mK | | | | | | | | | TREATMENT | | | | | WEIGHT | | | |
| EXTERNAL Ø / INTERNAL Ø | | DIMENSION GROUP | | 0 6 | 6 30 | 30 120 | 120 400 | 400 1000 | 1000 2000 | > 2000 | MEASURES ANGLE ± 30' | | MATERIAL 40CrMoMn7 | | | | | | | |
| W. DECIMAL | | | | ! | 0,1 | 0,1 | 0,1 | 0,5 | 0,8 | 1,2 | | | 2 | REPLACES | | | | | MODEL | |
| W.O. DECIMAL | | | | ! | 0,2 | 0,4 | 0,6 | 1 | 1,6 | 2,4 | | | 4 | | | | | | KON_3PLEX_TREAD_LOWER_X1 | |
| | | | | | | | SCALE 1:2 | | DESIGNED RB | | | | APPROVED GS | | | DATE Jul-28-21 | | SHEET 4 of 4 | | |
| | | | | | | | PRODUCT: KONSTRUKTA 3 PLEX - KIROV - LOWER TREAD X+I PARAMETRIC DRAWING | | | | | | | | | | DRAWING N. MG303647-00 | | FORMAT A2 | |